

The St. Johns Cultural Council & Island Fine Art
present selected works from

The Crescent Beach Paint Out



Washington Oaks Sunset by Tom Sadler, 12x16 Oil on Panel – 2008 Best of Show Award

January 30th through May 8th
St. Johns County Administration Building
500 San Sebastian View, St. Augustine, Florida



76-B San Marco Avenue
St. Augustine, FL 32084
Just south of the Mission
of Nombre de Dios on
San Marco Avenue
(904) 826-4116

www.stjohnsculture.com



6279 A1A South
St. Augustine, FL 32084
Just ½ Mile North of
the 206 Bridge in
Crescent Beach
(904) 471-5808

www.islandfineart.com

Mark your calendar for the
2009
Crescent Beach
Paint Out
October 25th – 31st

Welcome to Art in Public Spaces....

The St. Johns Cultural Council and Island Fine Art are pleased to partner with St. Johns County Board of County Commissioners to present the Inaugural Art in Public Spaces exhibit at the St. Johns County Administration Building. There is no better way to begin this program than with artwork that showcases the beauty of our county.

The artwork on exhibit is a sample of the work produced during the Crescent Beach Paint Out, an event organized by Island Fine Art. Each year artists gather to capture local scenes and landscapes found throughout St. Johns County in oils, watercolors and pastels. All works are painted outdoors *en plein air* with the subject directly in view rather than in a studio. During the fourth annual Paint Out, 172 paintings were completed by 32 different artists, many of whom are from right here in St. Johns County.

The inclusion of art in the public eye adds dimension, depth and character to a community, inspires young minds, and reinforces a local identity to which citizens can relate and take pride in. The St. Johns Cultural Council looks forward to beautifying our public places with a diverse selection of artwork from and of St. Johns County.

Our thanks to the St. Johns County Board of County Commissioners for giving us this opportunity to share local art with our local community.

Philip McDaniel
President
St. Johns Cultural Council

Hal Stringer
Paint Out Organizer
Island Fine Art



Christophe Cardot
Edgewater
www.christopheart.com

Oyster Creek
16x20 Acrylic on Linen



Marge Drew
Ormond Beach
www.artworksofmargedrew.com

Bad Hair Day
11x14 Oil on Claybord



Peter Carolin
Gainesville

Crescent Beach '08
49x66 Oil on Canvas



Cynthia Edmonds
Winter Park
www.cythiaedmonds.com

Rainy Day
16x12 Oil on Canvas



Jill Cerulli
St. Augustine

Anastasia State Park
9x12 Oil on Canvas



Sally Evans
Winter Park
www.sallyevans.com

Anastasia Bliss
13.5x18.5 Pastel on Paper



Grayson Conroy
Vero Beach
www.greysuncards-art.com

Florida Dunes
6x9 Oil on Canvas



Elisabeth Ferber
Orlando
www.Elisabeth-Ferber.com

Cathedral
12x12 Oil on Canvas



Jessie Cook
Palm Coast
www.jessiefineart.com

Marsh Vista
11x14 Oil on Canvas



Pamela Geiger
St. Augustine
www.PamelaGeigerFineArt.com

On Avelles Street
16x20 Oil on Canvas



Charles Dickinson
St. Augustine, Florida
www.charlesdickinson.net

Linda Holmes Painting
8x10 Oil on Canvas Panel



Elaine Hahn
Holiday
www.elainehahnart.com

Treasure Beach
12x24 Oil on Linen

Brenda Hofreiter

Winter Park
www.brendahofreiter.com

Palm Shadows
16x20 Oil on Canvas



Linda Holmes

St. Augustine
www.lindaholmesart.com

Bravo Lane
9x12 Oil on Panel



Frances Lynn

West Palm Beach
www.franceslynn.com

Crescent Waves II
12x16 Oil on Canvas



Bernie Martin

Orlando
www.bernardmartin.com

Rogue Matina
12x20 Oil on Board



Marilyn Masters

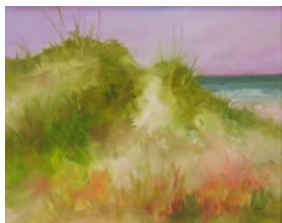
Ormond Beach
St. Augustine Lighthouse
18x24 Oil on Canvas



Karen Ann Patton

Ormond Beach
www.pleinairflorida.com/patton.htm

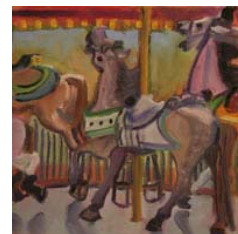
Crescent Beach Dunes II
11x14 Oil on Canvas



Barbara Perrotti

Ormond Beach
www.barbaraperrottistudios.com

Horsing Around
12x12 Oil on Canvas



Robert Rohrich

Palm Coast
www.fineartamerica.com/profiles/robert-rohrich.html

Intracoastal from Shore Drive
11x14 Oil on Panel



Tom Sadler

Orlando
www.tomsadler.com

The Shrimp Dock
12x16 Oil on Panel



Charles Schaefer

Palm Coast
www.schaeferartstudio.com

Marsh Threesome
12x16 Oil on Canvas



Jackie Schindehette

Ocala
www.floridalandscapes.com

San Julian Creek
12x16 Oil on Canvas
Board



Joe Taylor

Elkton
Boat Yard
18x24 Oil on Canvas





2008 Crescent Beach Paint Out Awards

www.islandfineart.com

Over 170 works of art were created by 32 artists during the 2008 Crescent Beach Paint Out. From that impressive body of work, our panel of judges chose the following winners:

Best of Show:	Tom Sadler	<i>Washington Oaks Sunset</i>
1st Place:	Sally Shisler	<i>Shenandoah Shrimp Boat</i>
2nd Place:	Berto Ortega	<i>First Light</i>
3rd Place:	Cynthia Edmonds	<i>Rainy Day</i>

Awards of Merit (in no particular order):

Charles Dickinson	<i>Behind the Fence</i>
Steve Andrews	<i>Fishin</i>
Bernie Martin	<i>Rogue Matina</i>
Linda Holmes	<i>Bravo Lane</i>
Joe Taylor	<i>Grounded</i>
Trish Vevera	<i>Bramble</i>
Marilyn Masters	<i>Saltwater Cowboys View</i>
Charles Schaefer	<i>Old Lobster Trap</i>
Jackie Schindehette	<i>San Julian Creek</i>
Christophe Cardot	<i>San Sebastian River</i>

United Way Award:

(determined from ballots turned in by guests at our United Way Fund Raiser)

Charles Dickinson	<i>The Apple Jack</i>
-------------------	-----------------------

Artist Choice Award

(determined from ballots turned in by other participating artists)

Charles Dickinson	<i>Behind the Fence</i>
-------------------	-------------------------

Visit our website (www.islandfineart.com/2008_paintout.htm) to see photographs of the entire 2008 Crescent Beach Paint Out collection including these award winning paintings.

What is Plein Air Painting?

En plein air is a French expression meaning "in the open air", and refers to the act of painting outdoors with the artist's subject in full view. *Plein air* artists capture the spirit and essence of a landscape or subject by incorporating natural light, color and movement into their works.

Artists have long painted outdoors, but in the mid-1800's, painting landscapes and other scenes on location finally became practical due to the invention of paints in tubes and the box easel. Before these innovations, each painter made their own paints by grinding and mixing dry pigment powders with various oils – a process difficult to perform away from the studio.

The box easel, also known as the "French Easel", included telescopic legs for easy set up and a compartment for carrying paints, brushes, a palette and other supplies. These easels are still a popular choice of artists today since they fold up to the size of a brief case and are easy to store and transport. Finally, the later introduction of canvas panels (canvas stretched over flat boards) made it possible for artists to easily carry all of their equipment and supplies to a variety of new outdoor locations.



The high point of *plein air* art came with the emergence of Impressionism. Artists of that period included Monet, Renoir, Pissarro, Cezanne, and Van Gogh. Interest in outdoor painting has remained constant throughout the 20th century and into the 21st. Today's artists carry on the traditions of these past masters by capturing the light and movement in landscapes that can only come from seeing the subject outdoors in its natural form.

The last 20 years has seen a resurgence of interest in *plein air* painting in the United States. During this time, groups of *plein air* artists began gathering together to paint at single locations or within certain geographic boundaries. These "**Paint Outs**" are now very popular and give artists a chance to share their talents and creativity with the public and with one another.

To purchase any of the paintings in this exhibit, please contact

The St. Johns Cultural Council
Phone: (904) 826-4116

Price list available upon request.

The illustration above is a work by John Singer Sargent titled "*Monet Painting by the Edge of a Wood*", Oil on Canvas (1885).